

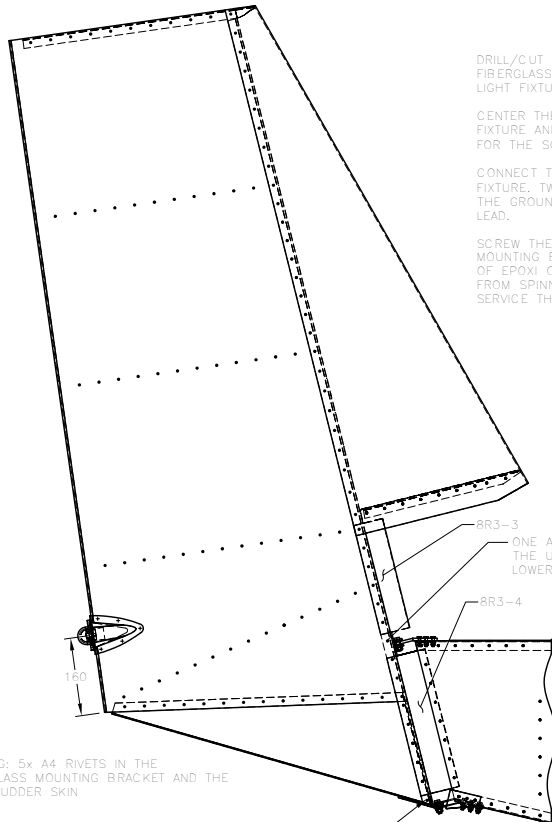
THE WHITE POSITION LIGHT IS LOCATED AT THE BOTTOM OF THE RUDDER BETWEEN THE SECOND AND THIRD REAR RIB. A FIBERGLASS MOUNTING BRACKET FITS OVER THE TRAILING EDGE OF THE SKIN TO PROVIDE A MOUNTING SURFACE FOR THE LIGHT FIXTURE.

BUILDING SEQUENCE FOR OPTIONAL TAIL LIGHT

- CUTOUT REAR SKIN
- DRILL THE FIBERGLASS MOUNTING BRACKET TO THE REAR SKIN
- CONNECT THE WIRES
- RIVET ASSEMBLY TO THE RUDDER.

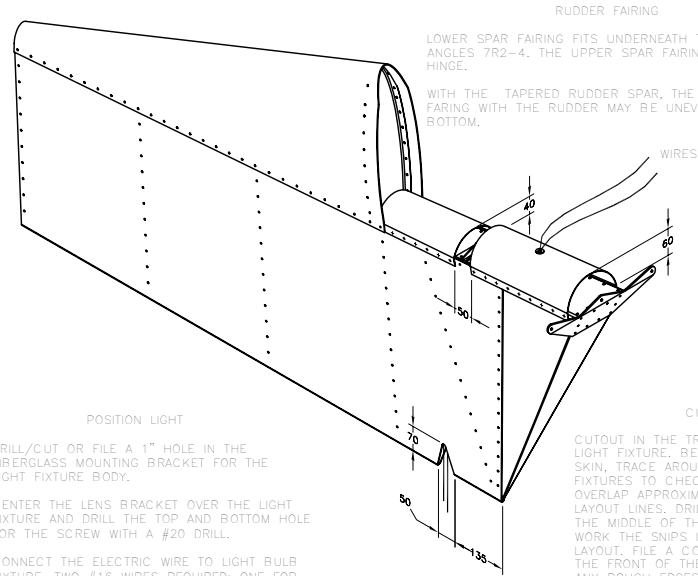
BUILDING SEQUENCE FOR FAIRINGS

- FAIRINGS OVERLAP ON TOP OF THE REAR SKIN. IF THE HOLES ARE PRE-DRILLED IN THE REAR SKIN, SLIDE THE FAIRING BETWEEN THE RUDDER SPAR AND THE REAR SKIN TO BACK DRILL THROUGH THE PILOT HOLES.
- DRILL AND CLECO ONE SIDE OF THE RUDDER ALLOWING FOR A 20MM OVERLAP, A4 PITCH 40
- DRAW THE FAIRING OVER TO THE OTHER SIDE, USE DUCT TAPE TO HOLD IN PLACE.
- UPPER FAIRING 8R3-3 HAS A RADIUS OF 40MM
- LOWER FAIRING 8R3-4 HAS A RADIUS OF 60MM
- A4 PITCH 40



RIVETING: 5x A4 RIVETS IN THE FIBERGLASS MOUNTING BRACKET AND THE REAR RUDDER SKIN

ADD ONE A4 RIVET AT 10MM FROM THE BOTTOM OF THE SPAR FLANGE.



RUDDER FAIRING

LOWER SPAR FAIRING FITS UNDERNEATH THE UPPER HINGE ANGLES 8R2-4. THE UPPER SPAR FAIRING FITS ABOVE THE HINGE.

WITH THE TAPERED RUDDER SPAR, THE OVERLAP OF THE FAIRING WITH THE RUDDER MAY BE UNEVEN AT THE TOP AND BOTTOM.

WIRES

CUTOUT

CUTOUT IN THE TRAILING EDGE FOR THE LIGHT FIXTURE. BEFORE CUTTING THE SKIN, TRACE AROUND THE FIBERGLASS FIXTURES TO CHECK FOR SUFFICIENT OVERLAP APPROXIMATELY 20mm TO THE LAYOUT LINES. DRILL A LARGE HOLE IN THE MIDDLE OF THE CUTOUT AREA AND WORK THE SNIPS IN TO CUT ALONG THE LAYOUT. FILE A CORNER RELIEF HOLE AT THE FRONT OF THE CUTOUT AND FILE ANY ROUGH EDGES.

POSITION LIGHT

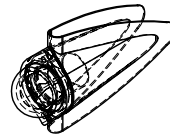
DRILL/CUT OR FILE A 1" HOLE IN THE FIBERGLASS MOUNTING BRACKET FOR THE LIGHT FIXTURE BODY.

CENTER THE LENS BRACKET OVER THE LIGHT FIXTURE AND DRILL THE TOP AND BOTTOM HOLE FOR THE SCREW WITH A #20 DRILL.

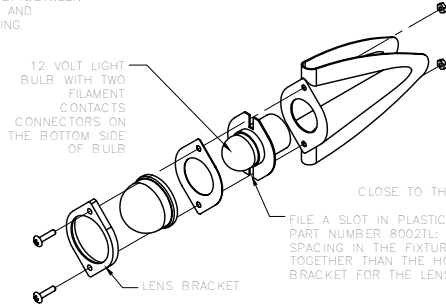
CONNECT THE ELECTRIC WIRE TO LIGHT BULB FIXTURE. TWO #18 WIRES REQUIRED; ONE FOR THE GROUND AND THE OTHER IS THE POSITIVE LEAD.

SCREW THE ASSEMBLY TO THE FIBERGLASS MOUNTING BRACKET. ADD A COUPLE OF DROPS OF EPOXI ON THE NUT, THIS WILL TO KEEP IT FROM SPINNING WHEN THE LENS IS REMOVED TO SERVICE THE LIGHT BULB.

REAR VIEW

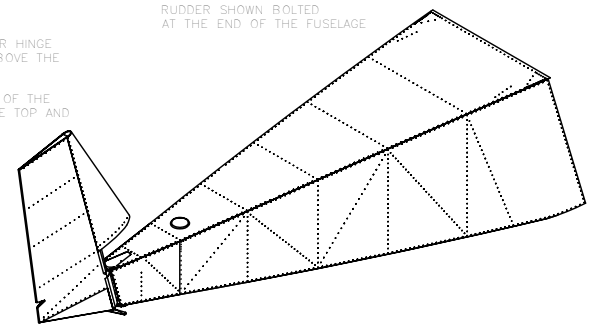


FTB FIBERGLASS MOUNTING BRACKET



CLOSE TO THE EDGE

FILE A SLOT IN PLASTIC LIGHT FIXTURE PART NUMBER 8002LI. THE HOLE SPACING IN THE FIXTURE ARE CLOSER TOGETHER THAN THE HOLES IN THE BRACKET FOR THE LENS COVER.

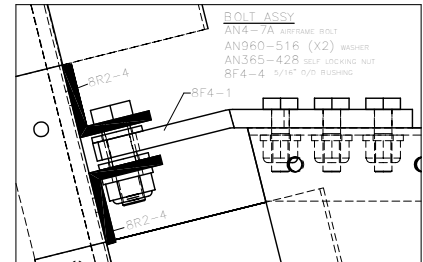


RUDDER SHOWN BOLTED AT THE END OF THE FUSELAGE

RUDDER HINGE DETAIL

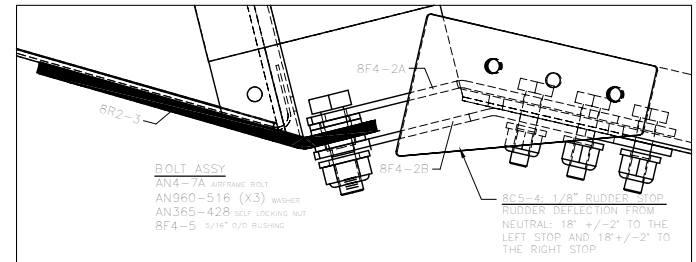
UPPER HINGE: THE AN4 BOLT CLAMPS THE 10mm BUSHING 8F4-4 FROM TURNING IN BETWEEN THE TWO UPPER RUDDER HINGE ANGLES 8R2-4. THE BUSHING TURNS IN THE 5/16" HOLE DRILLED IN THE UPPER RUDDER HINGE 8F3-1 BOLTED TO THE FUSELAGE LONGERONS.

LOWER HINGE: THE AN4 BOLT CLAMPS THE 8mm LOWER RUDDER BUSHING 8F4-5 FROM TURNING IN BETWEEN THE BOTTOM HINGE PLATE 8R4-2B AND THE UPPER RUDDER HINGE PLATE 8R4-2A. THE BUSHING TURNS IN THE 5/16" HOLE DRILL THE RUDDER HORN 8F2-3



BOLT ASSY

- AN4-7A AIRFRAME BOLT
- AN960-516 (X2) WASHER
- AN365-428 SELF LOCKING NUT
- 8F4-4 5/16" O/D BUSHING



BOLT ASSY

- AN4-7A AIRFRAME BOLT
- AN960-516 (X3) WASHER
- AN365-428 SELF LOCKING NUT
- 8F4-5 5/16" O/D BUSHING

8C5-4: 1/8" RUDDER STOP
RUDDER DEFLECTION FROM NEUTRAL: 18" +/-2" TO THE LEFT STOP AND 18" +/-2" TO THE RIGHT STOP

STOL CH 801	ORIGINAL INFO MJM 07/05/00	DESCRIPTION UPPER AND LOWER RUDDER FAIRING OPTIONAL: WHITE POSITION TAIL LIGHT	ASSY NO. 8RU-3
	REVISION INFO MJM 02/25/02		
COPYRIGHT © 2002 ZENITH AIRCRAFT CO. WWW.ZENITHAIR.CO			