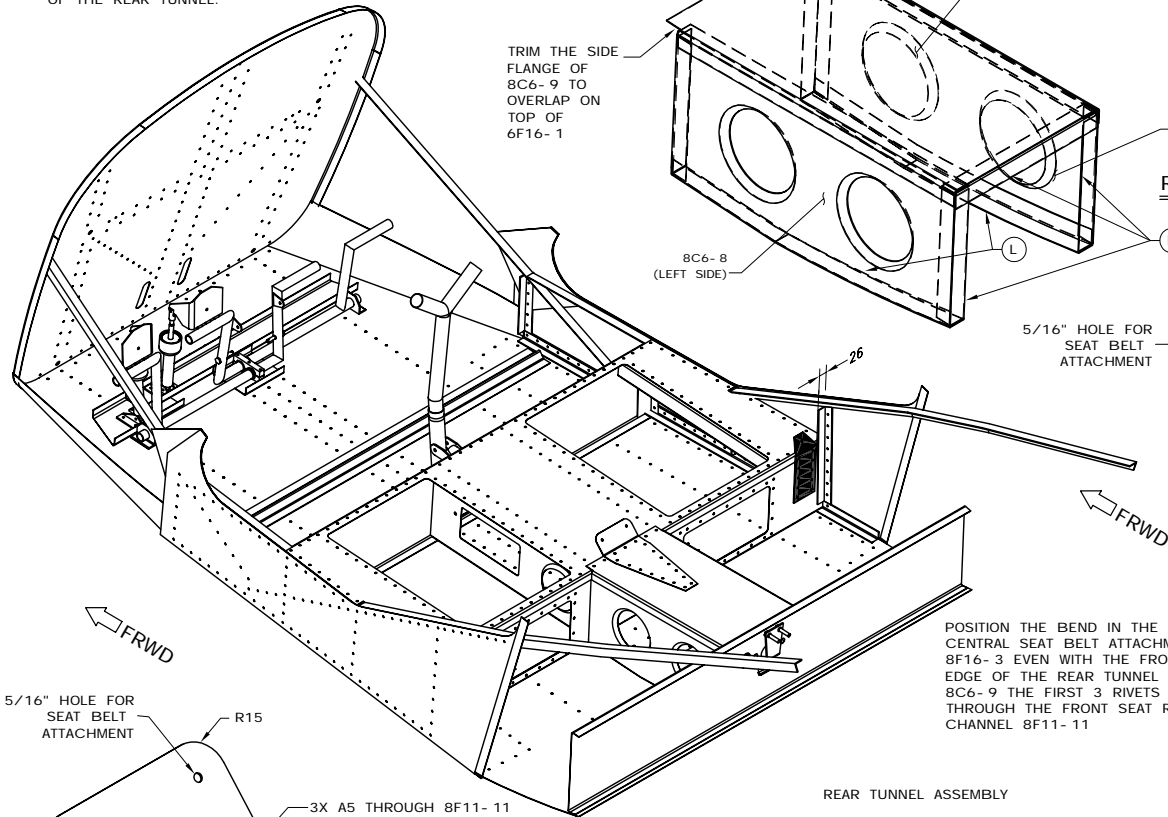


LOCATION OF 8F16-3 ON THE AIRCRAFT CENTER LINE ON TOP OF THE REAR TUNNEL.



5/16" HOLE FOR SEAT BELT ATTACHMENT

R15

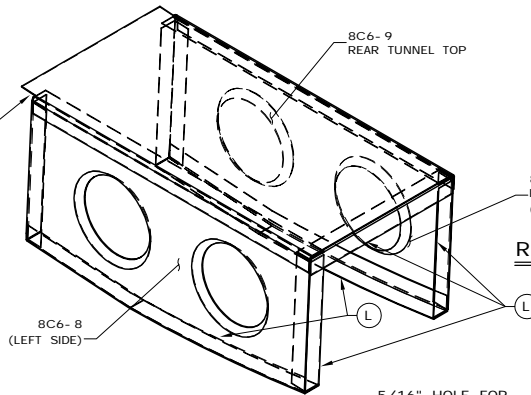
3X A5 THROUGH 8F11-11

14X A5 IN 8C6-9

8F16-3 CENTER SEAT BELT ATTACHMENT

WAIT TO RIVET THE FRONT SEAT TOP PANEL 6F16-1 AND THE REAR TOP CHANNEL 8C6-9 UNTIL AFTER ALL THE CONTROLS AND FUEL SYSTEM IS INSTALLED.

TRIM THE SIDE FLANGE OF 8C6-9 TO OVERLAP ON TOP OF 6F16-1



DO NOT STEP OR SIT ON THE TUNNEL

REAR TUNNEL DETAIL

5/16" HOLE FOR SEAT BELT ATTACHMENT

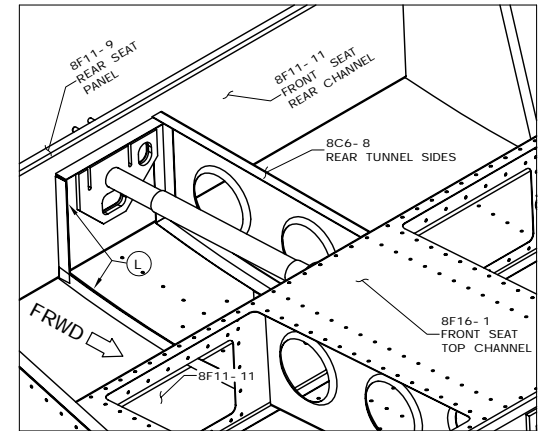
10 X A5 IN 8F16-2

8F16-2 LATERAL SEAT BELT ATTACHMENT QTY 2

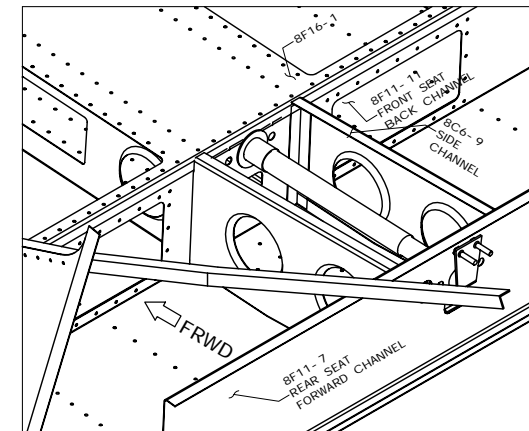
POSITION THE BEND IN THE CENTRAL SEAT BELT ATTACHMENT 8F16-3 EVEN WITH THE FRONT EDGE OF THE REAR TUNNEL TOP 8C6-9 THE FIRST 3 RIVETS ARE THROUGH THE FRONT SEAT REAR CHANNEL 8F11-11

REAR TUNNEL ASSEMBLY

- 1) TRIM 20MM OFF THE SIDE FLANGES OF THE TUNNEL TOP 8C6-9
- 2) LINE UP THE CENTER LINE OF 8C6-9 WITH THE AIRCRAFT CENTER LINE ON 8F16-1 AND 8F11-7, WITH A MARKER MARK THE OUTER EDGES OF THE TUNNEL TO LOCATE THE L ANGLES.
- 3) CUT A CARDBOARD TEMPLATE TO FIT BETWEEN THE FRONT AND REAR SEAT CHANNELS 8F11-7 AND 8F11-11, THE FRONT IS EVEN WITH THE FRONT SEAT PANEL 6F16-1, THE BACK IS APPROXIMATELY 20MM BELOW THE REAR SEAT PANEL 8F11-9. CUT THE BOTTOM TO FOLLOW THE CURVATURE OF THE CABIN FLOOR SKIN 8F8-7
- 4) USE THE CARDBOARD TEMPLATE TO TRACE AND TRIM THE TUNNEL SIDES 8C6-8, QTY= 1 LEFT & 1 RIGHT
- 6) CLECO THE TOP 8C6-9 TO THE SIDES 8C6-8, #30 HOLE PITCH 30 IN THE TOP AND SIDE FLANGE.
- 7) FIRST CLECO THE L ANGLES TO THE FRONT AND REAR SEAT CHANNELS, THEN DRILL THE TUNNEL SIDES TO THE L ANGLES.
- 8) ADD THE BOTTOM L TO THE FLOOR SKIN, THE VERTICAL FLANGE OVERLAPS ON TOP OF THE L ANGLE AT THE FRONT AND BACK. CRIMP THE BOTTOM L ANGLES TO FOLLOW THE CURVATURE OF THE CABIN FLOOR SKIN 8F8-7
- 9) RIVETS IN THE L ANGLE A4 PITCH 30



AT THE BACK THE TUNNEL SIDES ARE APPROXIMATELY 20MM BELOW THE REAR SEAT PANEL 8F11-9. LENGTH OF L ANGLES CONNECT THE TUNNEL SIDES TO THE SEAT CHANNELS 8F11-7 AND 8F11-11.



AT THE FRONT THE TUNNEL SIDES ARE FLUSH WITH THE FRONT SEAT TOP PANEL 8F16-1. THE TUNNEL TOP OVERLAPS 8F16-1 ON 20MM

OUTSIDE TO OUTSIDE DISTANCE BETWEEN THE L ANGLES IS APPROXIMATELY 105MM

NOTE: THE TUNNEL IS CENTERED ON THE AIRCRAFT CENTER LINE

STOL CH 801	ORIGINAL INFO MJM 10/04/00	DESCRIPTION REAR TUNNEL ASSEMBLY & CENTER SEAT BELT ATTACHMENT	ASSY NO.
	REVISION REF MJM 12/15/02	COPYRIGHT © 2002 ZENITH AIRCRAFT CO. WWW.ZENITHAIR.COM	8ZZ-1