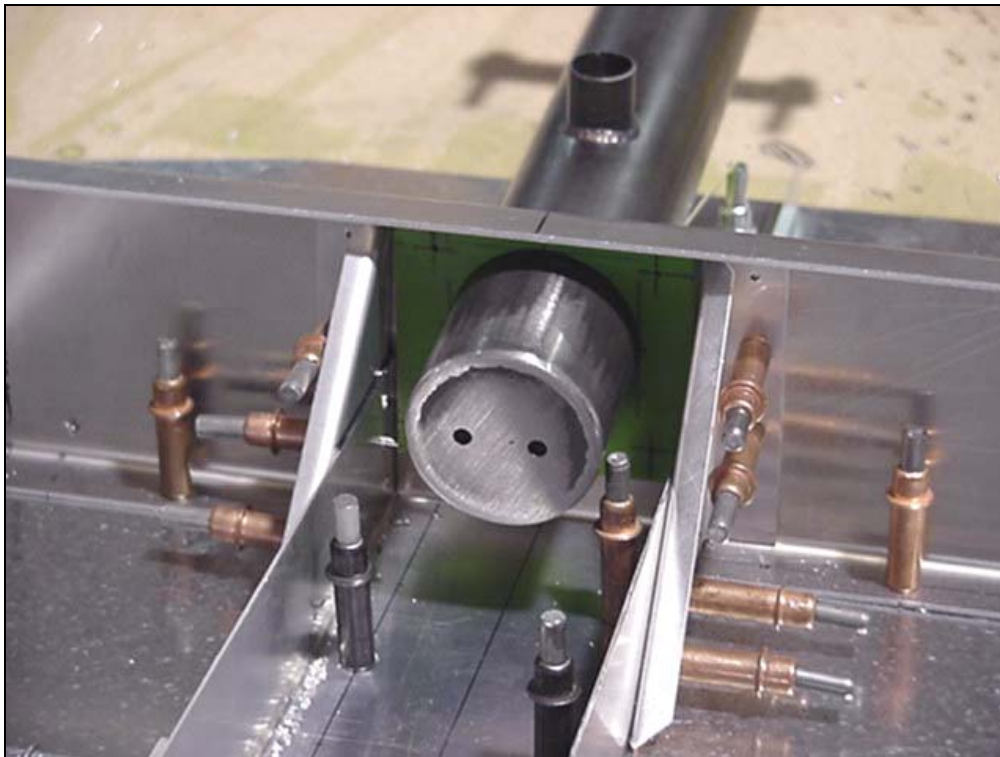


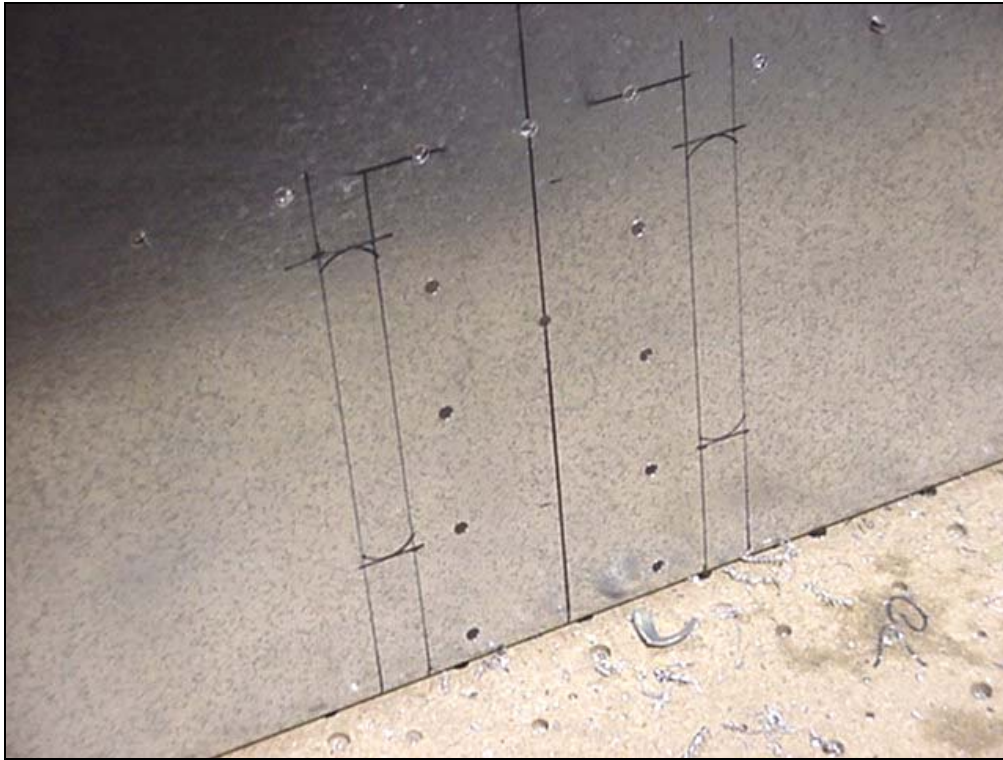
7F7-4C Upper Bearing

File a radius on front side. This will allow the Bearing to set nicely in the Upper Channel. Layout and drill the four holes.



**7F7-4C Upper Bearing
7F7-1SP Upper Channel**

Position the Upper Bearing on the inside of the Upper Channel. Using the Nose Gear Strut 7L1-1J to center the Upper Bearing in the 2" hole is very helpful. Drill and cleco. The holes can be opened up to 3/16" for AN3-6A Bolts. (A plastic cap has replaced the steel cap in the Nose Gear Strut.)



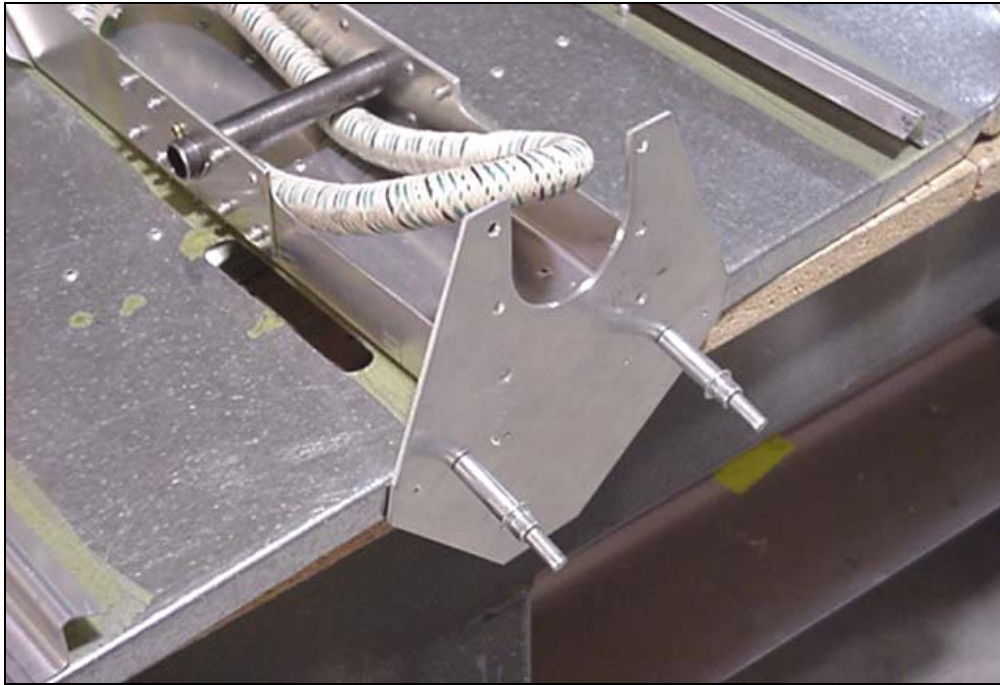
7F1-1 Firewall

Layout the slots for the Steering Rods.



7F1-1 Firewall

Drilling a few holes and then cutting the slots with snips is helpful. Using baffle material to seal the slots from carbon monoxide gases can be installed on the inside of the firewall.

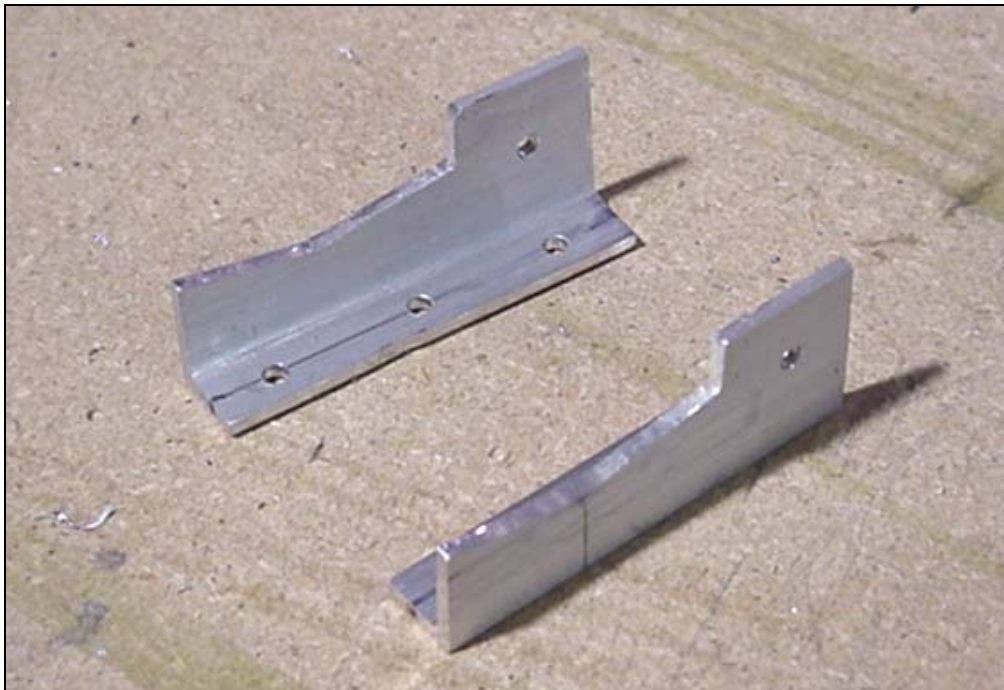


7F8-4 Rear Lower Bearing

CHECK: The Nose Gear is parallel to the firewall: 60mm from the center of the Nose Gear to the Firewall.

REF: 7-F-10 top right diagram

Back drill the holes for the firewall line.



7F8-6 Nose Gear Stop

CHECK: When the top of the Nose Gear 7L1-1J is even with the top of the Upper Channel 7F7-1SP the underside of the 3/4" tube for the Steering Rods welded on 7F7-1SP will rest on the Nose Gear Stop 7F8-6

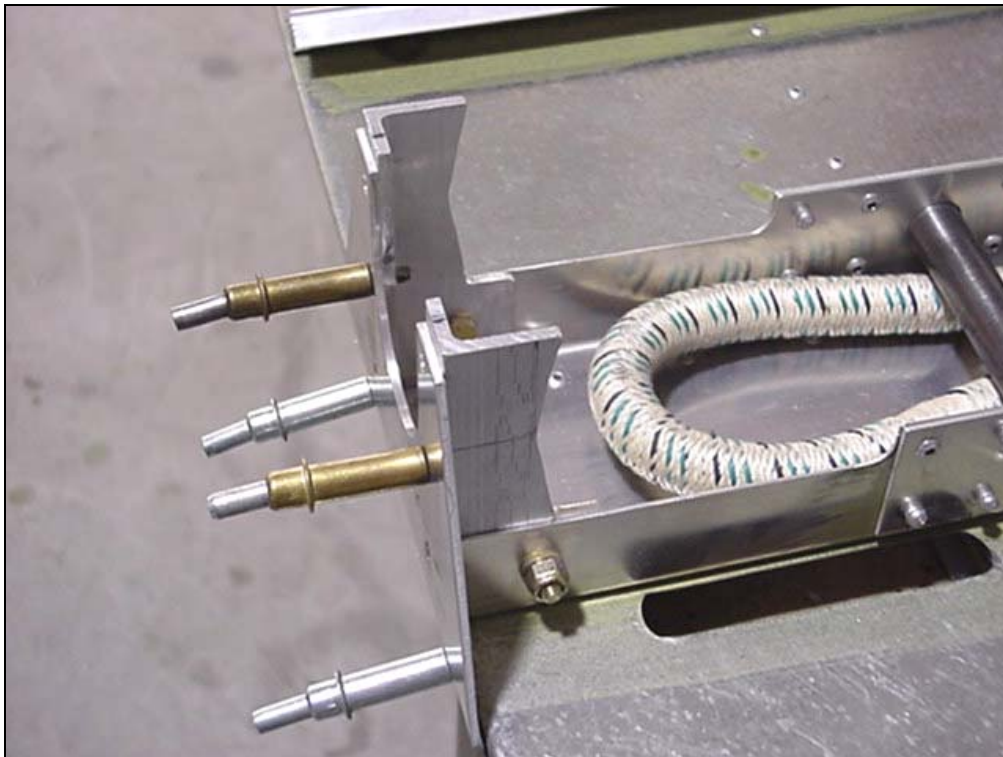
CUT: Trim the bottom flange from 1" to 17mm

Mark the cut out for the Nose Gear Stop. When cutting the two angles, it is best to cut the two Gear Stops together. This will allow the Nose Gear Strut to rest evenly on the stops.



**7F8-6 Nose Gear Stop
7F8-4 Rear Lower
Bearing**

Clamp the Stop 7F8-6 on inside of the Channel 7F7-2C. Then back drill the boltholes through the Nose Gear Stops 7F8-6.



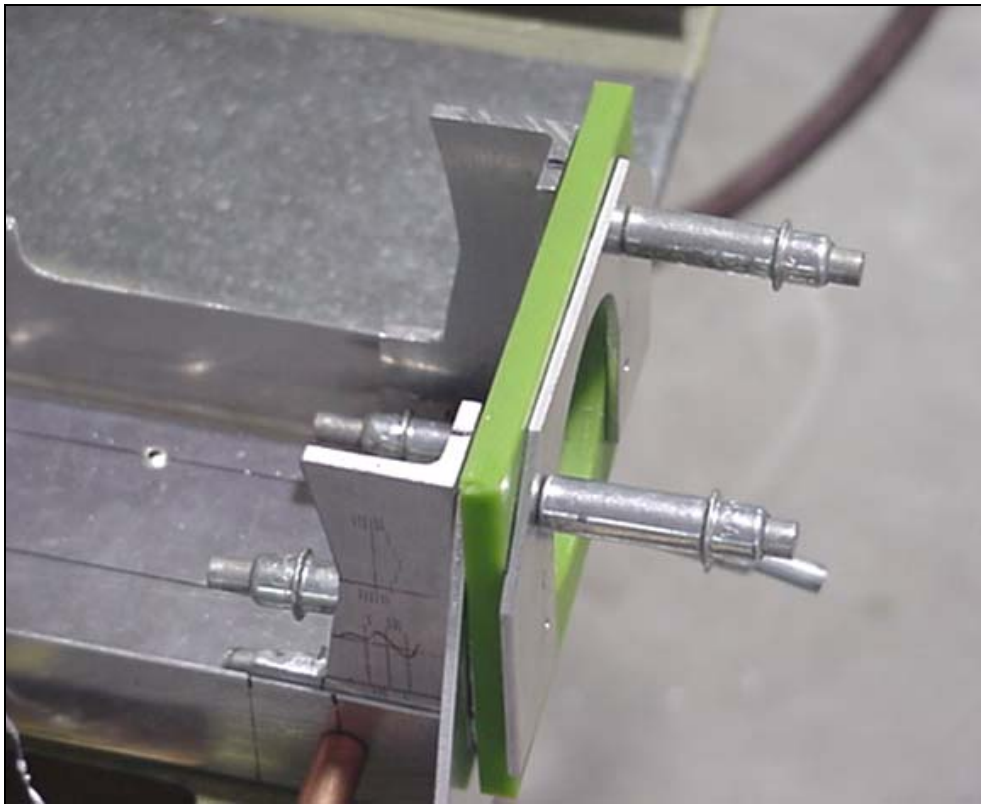
**7F8-6 Nose Gear Stop
7F8-4 Rear Lower
Bearing**

Before drilling double check for edge distance, also check that the Nose Gear 7L1-1L will fit between the left and right stop 7F8-6



7F8-5 Front Lower Bearing

Measure 28mm from the back edge and mark the center. Cut the 2" hole. (Supplied predrilled and precut after 5-2006).



**7F7-4C Lower Bearing
7F8-5 Front Lower Bearing
7F8-6 Nose Gear Stop**

At this stage use the nose gear or a small piece of 2" pipe to line up the Bearings. Position the 7F7-4C, 7F8-5 and back drill through 7F8-6 Nose Gear Stop.



7F8-5 Front Lower Bearing

After drilling the Bearing together.



7F7-4C Lower Bearing

The Lower Plastic Bearing will need to be cut in half after it has been drilled.

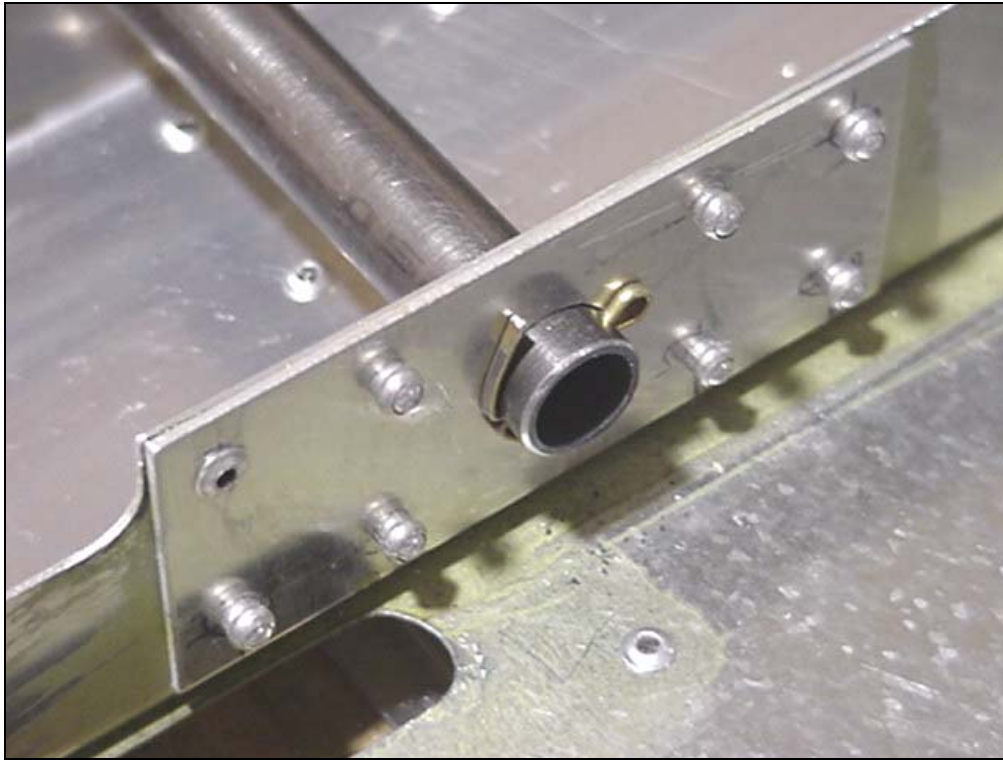


Deburr and apply grease before installing the Nose Gear.



7F7-6C Bungee Pin

Drill two 1/8 holes for the Cotter Pin.



7F7-6C Bungee Pin

AN380-3-4 Cotter Pin

Position the Bungee Pin and Cotter Pin. Notice the rivets pulled from the inside of 7F7-2C.



7L1-1J Nose Gear Strut
1080 Bungee

Deburr and rivet the firewall together. To install the Bungee to the Nose Gear, use a small pipe sliding the bungee down the pipe.