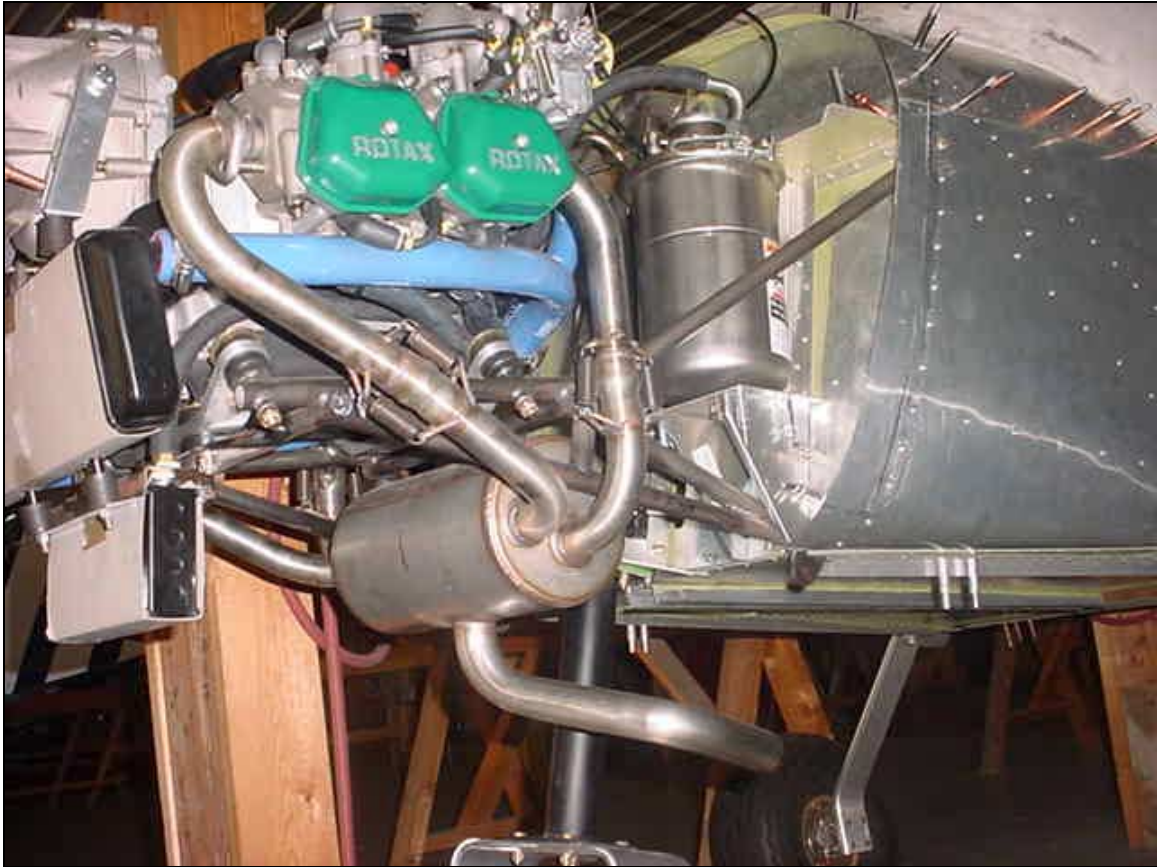


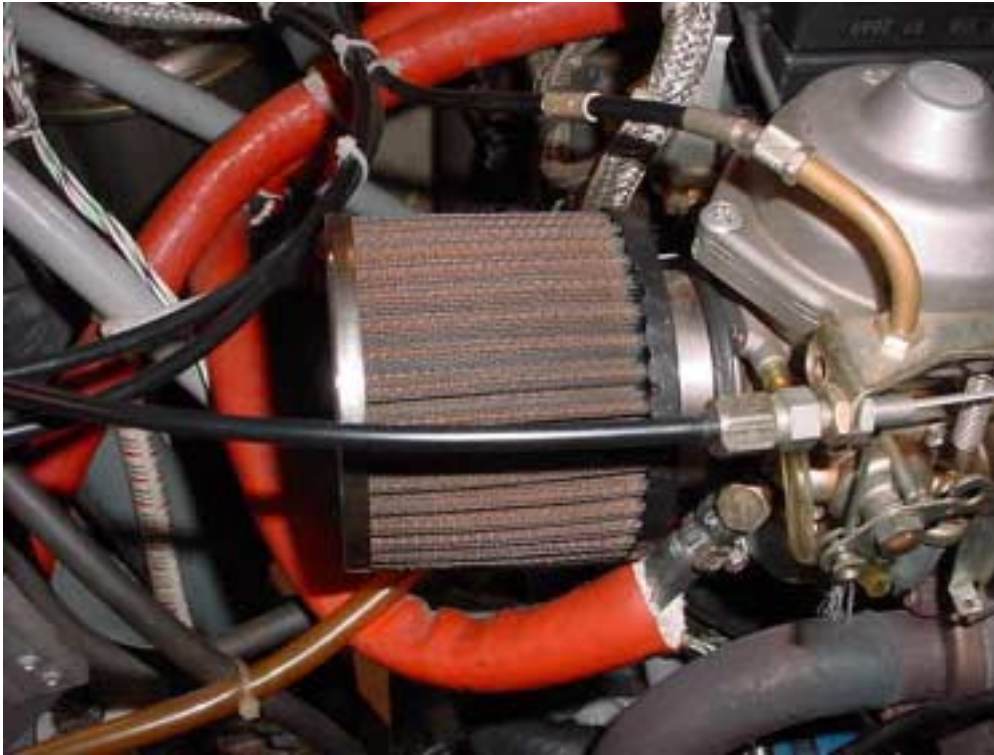
SECTION 7

AIR FILTER & MUFFLER



MUFFLER AND CABIN HEAT

**AIR FILTER
RC1150**



Location of air filter on the back of each carburetor.
Photo of right side.



Photo of 912 engine without the Tuned Rotax Airbox
Photo of left side



**MUFFLER ASSEMBLY
(P/N MUFF)**

- 2 FRONT ELBOWS
- 2 REAR ELBOWS
- 1 COLLECTOR

Front right elbow



Front left elbow



Rear left elbow



Right rear elbow



Photo of left side



Photo of right side



**EXHAUST SPRING
938-790**

Silicone may be paced on the springs to reduce vibration noise.
(not shown on this photo)



Springs may also be safety wired (not shown on these pictures).



Adjust positions left and right for maximum clearance space between exhaust pipes, radiator and other components.



Detail left side, looking up from behind the firewall



Right side, looking up from behind the firewall



Do not over torque the muffler bolts, notice the gap at the top and bottom of the exhaust socket and the engine.



**HEAT SHROUD
HS-7**

Cutout to go around tail pipe. Flange outlet connects Scat hose to CHO-1
(2" flange on firewall)

