

**SEAT BELT ATTACHMENT
6B18-4**

Layout the 5/16" hole on the 1-1/2" flange.



Qty: 2

Cut and file the sides smooth.



Positioned on the front side of the gear upright 6B11-3



Clamp the seat belt attachment 50mm up from the top of the gear channel 6B8-5



Remove the upright. Mark the top and bottom of the attachment on the extrusion.



Layout the bolt holes. Pre-drill.

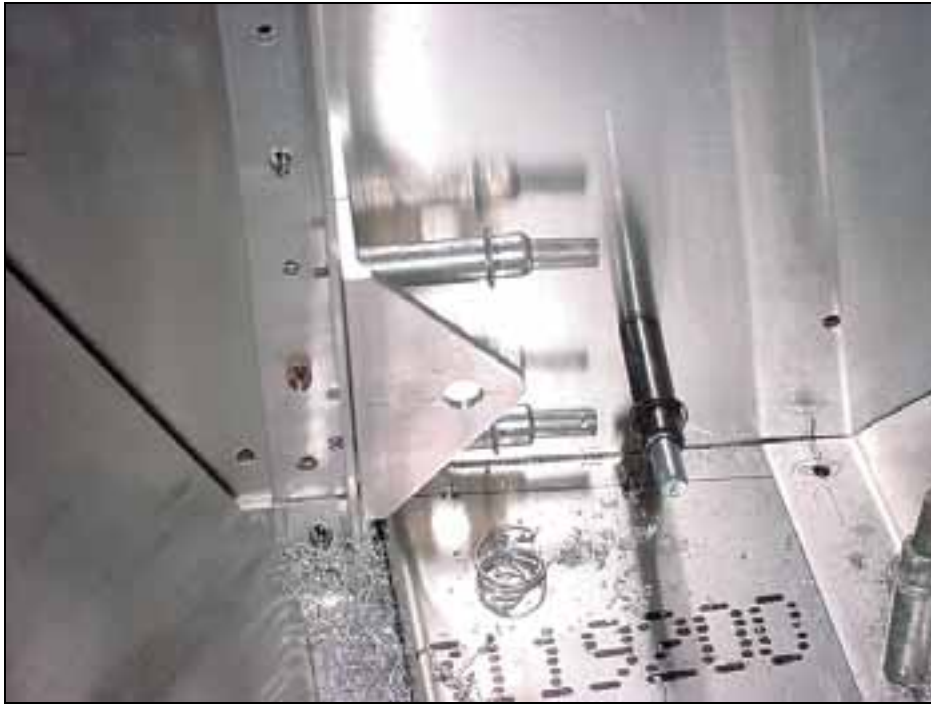


Re-position the attachment to the upright.



Drill and Cleco.

Back drill through the pilot holes in to the attachment.



2 BOLTS AN3-5A
6B18-4 to 6B11-3

Left side.



Right side.



Clamp the L angle to the front seat panel 6B15-4

Install the L angles in the corner of the seat and the fuselage side skin.



L ANGLES

A5 PITCH 20

L Angles in the corner of the front seat panel 6B15-4 with the fuselage side 6B11-2 (two pieces, one on each side of the upright 6B11-3).



Another view of the L angle in the corner of the front seat panel 6B15-4 and the forward side skin 6B11-2



Short L angle behind the gear upright 6B11-3





Left side: Note the no rivet zone for the flap mount gusset 6B19-9

L angle in the corner of the rear seat panel 6B5-1 and the forward side skin 6B11-2



L ANGLES

Detail of left side.
L angle is trimmed flush to the bottom edge of the flap mount gusset 6B19-9



L ANGLES

A5 PITCH 25

L angle to 6B15-4

L angle along the I/B edge of the front seat panel 6B15-4.



L angles along the front, bottom and back edge of the arm rest side 6B18-1.

NOTE: Use the width of the arm rest cover 6B18-2 to set the width of the L angles.



Detail of bottom aft overlap on top of the gear channel 6B5-5



**ARM REST SIDE
6B18-1**

Qty: 2

The arm rest side overlaps on the inside of the L angles.



**A5 PITCH 25
L angles to 6B18-1**

Plan for a no rivet zone for 6B18-3



**SEAT BELT ATTACHMENT
DOUBLER PLATE
6B18-3**

Plate overlaps on the outside of the L angles.



6 RIVETS A5
Through L angles and 6B18-1

Drill the 5/16" hole through the doubler 6B18-3 and the arm rest side 6B18-1.



**SEAT BOTTOM
6B18-6**



Pre-drill the front edge of the seat bottom.



A5 PITCH 25
Front: 6B18-6 into 6B15-5
Rear: 6B18-6 into 6B5-1

Ref. bottom right diagram on
drawing 6-B-18

Note: the Seat Bottom is unsupported along the side.



**ARM REST COVER
6B18-2**

Clamp the cover on over the arm rest sides.



L angle in the corner of the
arm rest cover 6B18-2 and
the center seat back
channel 6B16-2

Open a piece of L angle 30 degrees.