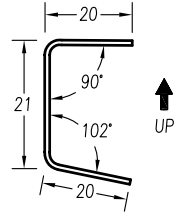
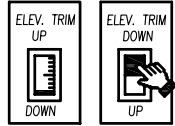
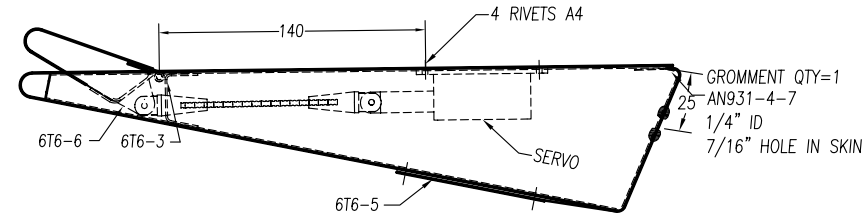


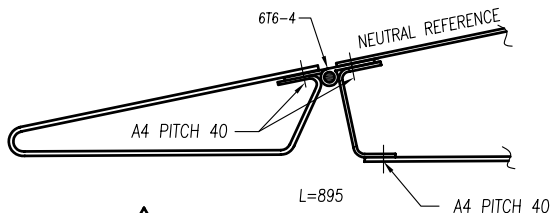
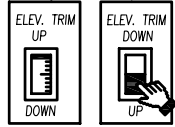
**1** **TRIM TAB SKIN**  
 t=.016" 6061-T6 (1 REQ'D)



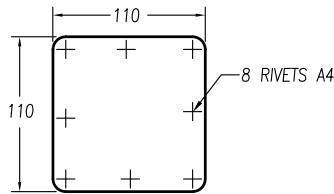
**3** **ELEVATOR CUTOUT CHANNEL**  
 t=.025" 6061-T6 (1 REQ'D)



INSTRUMENT PANEL PLACARDS  
 NOTE: FOR TRIM TAB SWITCH, USE OPPOSITE PLACARD AS TRIM TAB INDICATOR

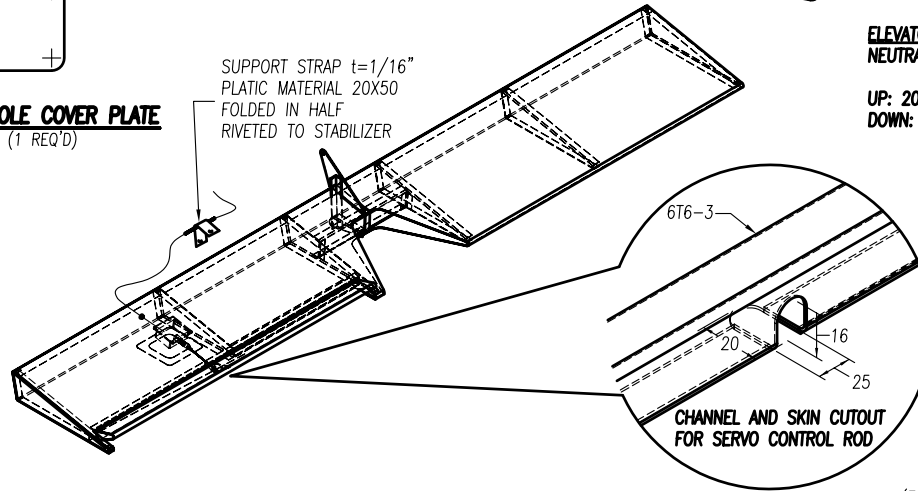


**4** **PIANO HINGE**  
 MS20257-4 (1 REQ'D)  
 1-1/2" OPEN LENGTH

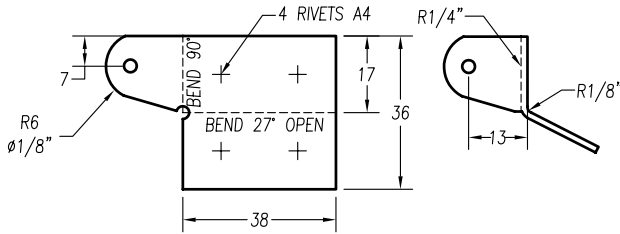


**5** **ACCESS HOLE COVER PLATE**  
 t=.025" 6061-T6 (1 REQ'D)

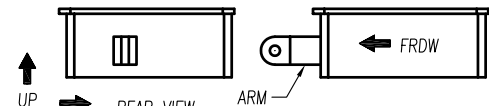
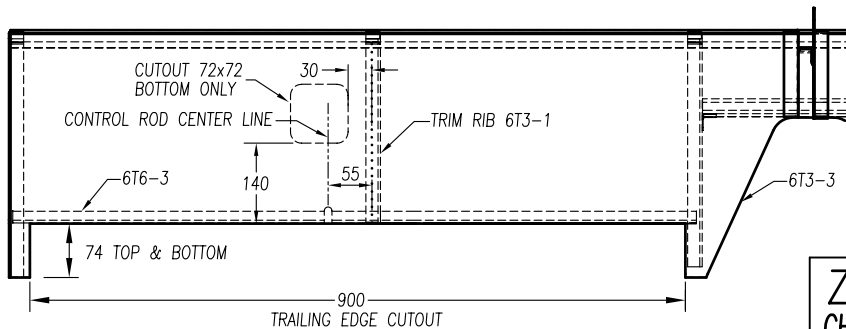
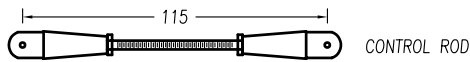
SUPPORT STRAP t=1/16"  
 PLATIC MATERIAL 20X50  
 FOLDED IN HALF  
 RIVETED TO STABILIZER



**ELEVATOR TRIM TAB DEFLECTIONS**  
 NEUTRAL: TOP SURFACE IS IN LINE WITH TOP SURFACE OF ELEVATOR  
 UP: 20 DEGREES  
 DOWN: 40 DEGREES



**6** **TRIM TAB HORN ANGLE**  
 t=.063" 6061-T6 (1 REQ'D)



ELECTRIC TRIM SYSTEM  
 WWW.RAYALLENCOMPANY.COM  
 P/N T2-7A-TS  
 .7" TRAVEL

COLOR CONNECTION CHART  
 (FOR FUTURE REFERENCE TO CONNECT SWITCH)

SERVO WIRES	BELTON 5 WIRES
WHITE	WHITE
WHITE	BLACK
WHITE/ORANGE	BROWN
WHITE/GREEN	GREEN
WHITE/BLUE	RED

**ZODIAC**  
 CH 601 XL

RECESSED ELEVATOR TRIM TAB

**6-T-6**