

## SECTION 2 BOLT TO THE ENGINE MOUNT



- Bolting the engine to the engine mount
- Cranks shaft is level to the fuselage reference line



Holes in E1-1X to bolt the engine.



**M10x1.5x20**  
**12.9 BOLTS**  
QTY: 4

Drill the head of the bolts with a 1/16" drill bit to safety ties the front bolt to the rear bolt



Left side

Front and rear bolts are safety tied together.



Right side



Rear right hose makes overtop the bolt



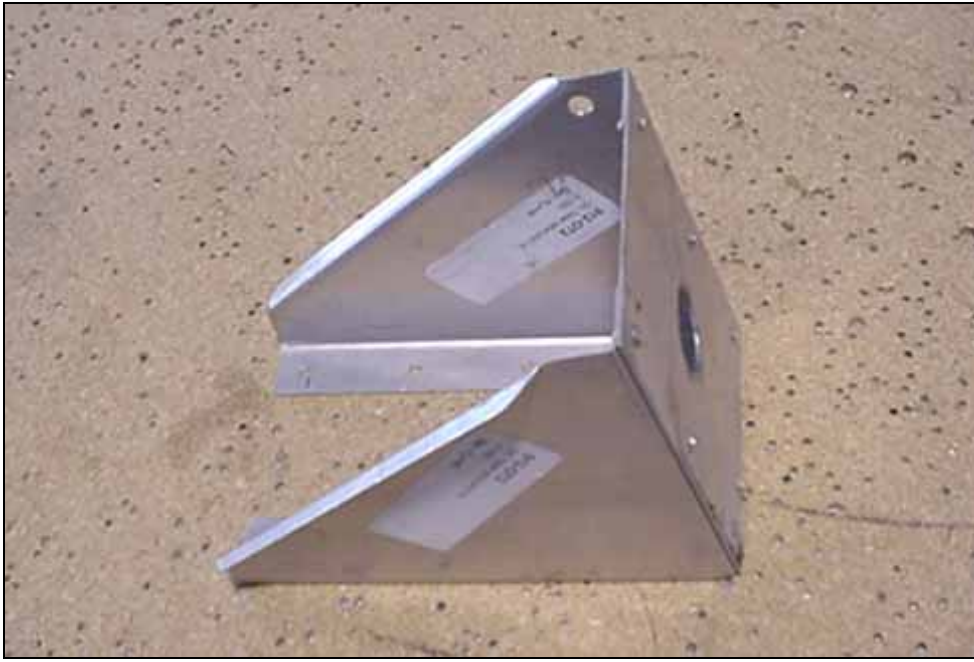
Protective sleeve

Piece of radiator hose sliced open (approximately 3 inches long)



Right rear engine mount bolt

Sleeve slips over the hose to protect it from the engine mount bolt.



**6E6-1  
OIL TANK TOP  
BRACKET**

**6E6-2  
OIL TANK SIDE  
BRACKETS**

Bottom support bracket for oil reservoir



**6E6-3  
OIL TANK TOP  
SUPPORT**

**COMMENT:**  
With the 912 where the Rotax tuned air-intake is not used, the hose clamp is installed to the front flange of the Firewall Top Stiffener

Ref. drawing 6-R-2, bracket is used when the tuned air intake box is installed.



Oil reservoir for Rotax dry sump.



Oil reservoir and brackets