

## SECTION 6 PROPELLER EXTENSION



- GSC wood 3 blade ground adjustable prop (with aluminum root ends)
- 2.5" prop extension
- 9" Spinner

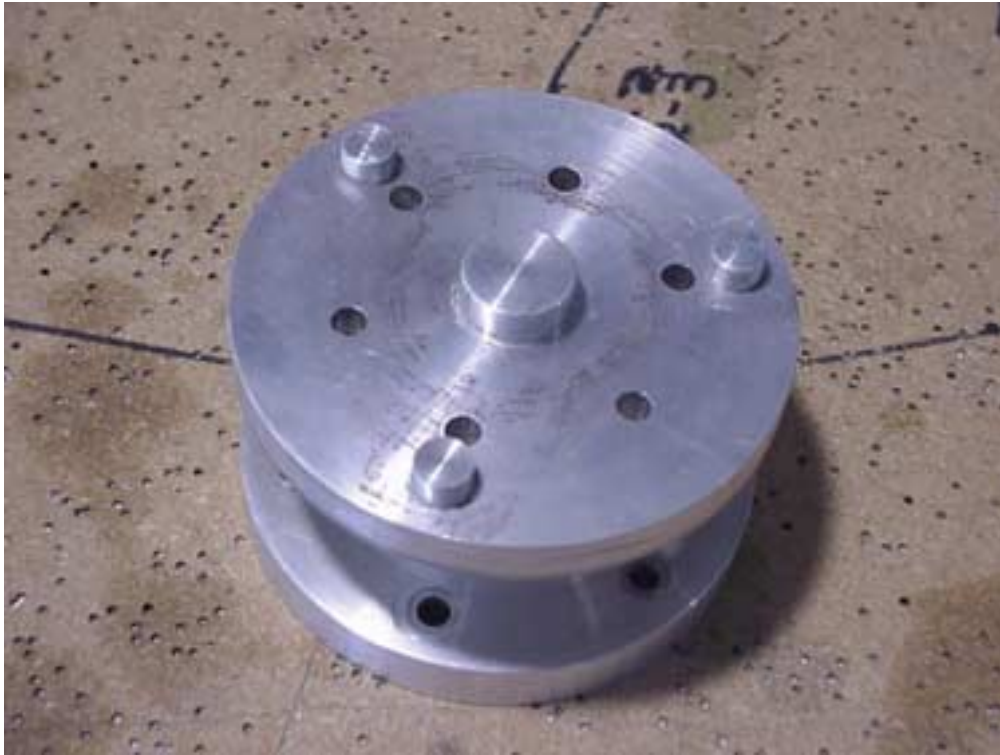


**ROUND NECK NUT M8  
842-632**

Press in Lug nuts from the  
backside of the prop  
flange.



**2.5" PROP EXTENSION**



FRONT SIDE (PROP)



BACK SIDE (ENGINE)



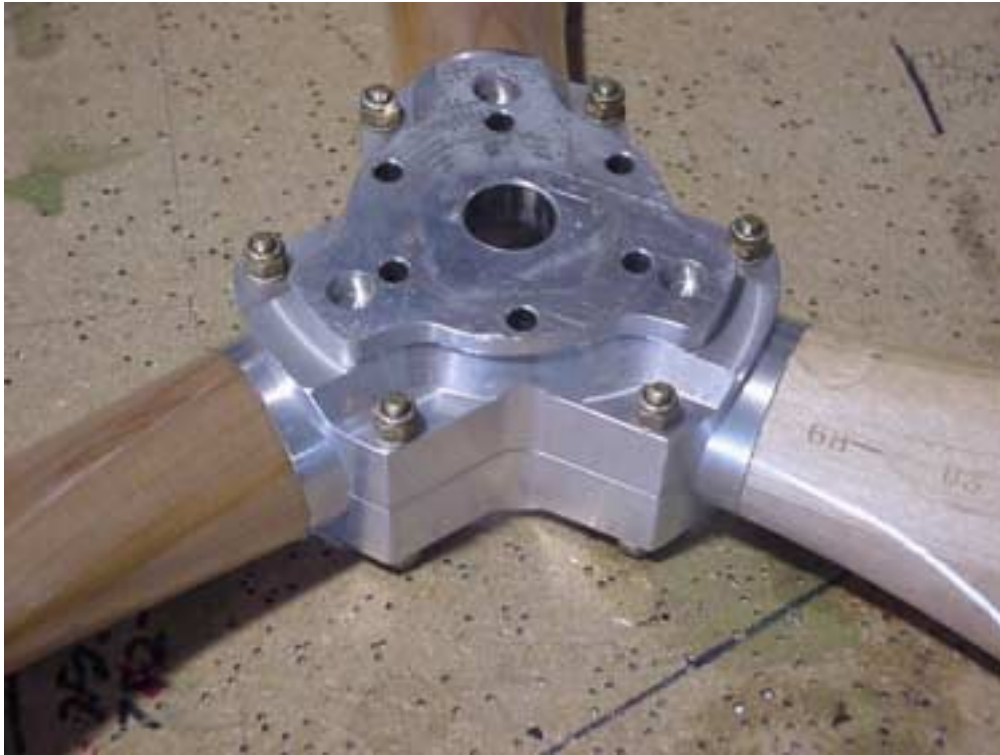
M BOLTS

DRILL HEAD w/ 1/16"  
HOLE



Bolt prop extension to  
engine hub with mm bolts  
through torque studs.

Safety tie the heads of the  
bolts (3 pairs).

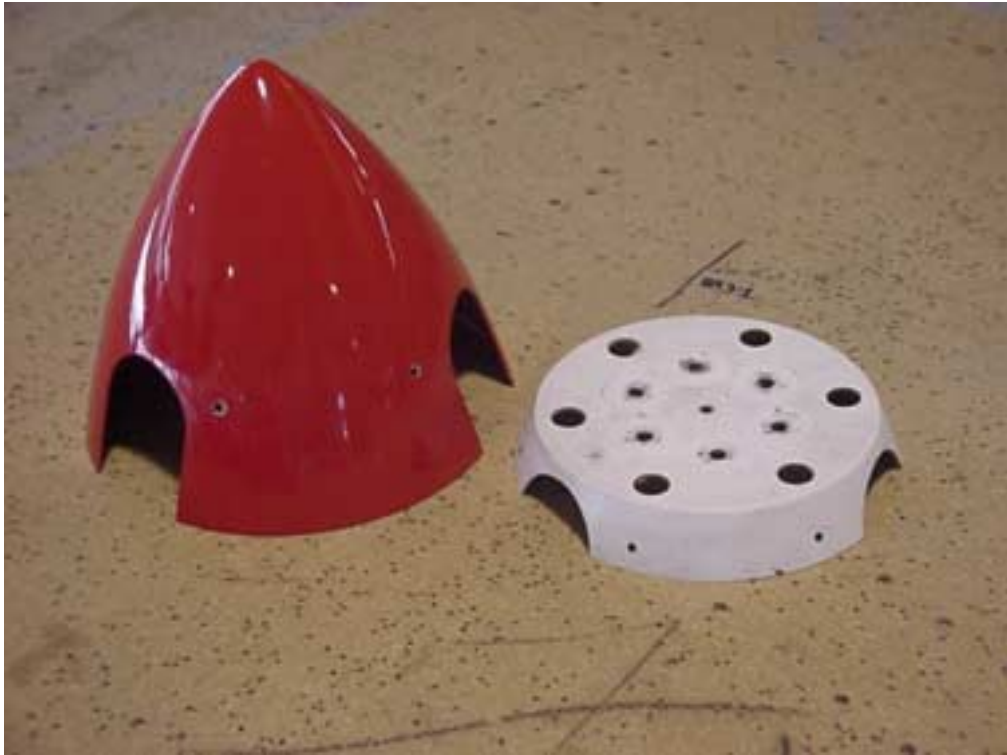


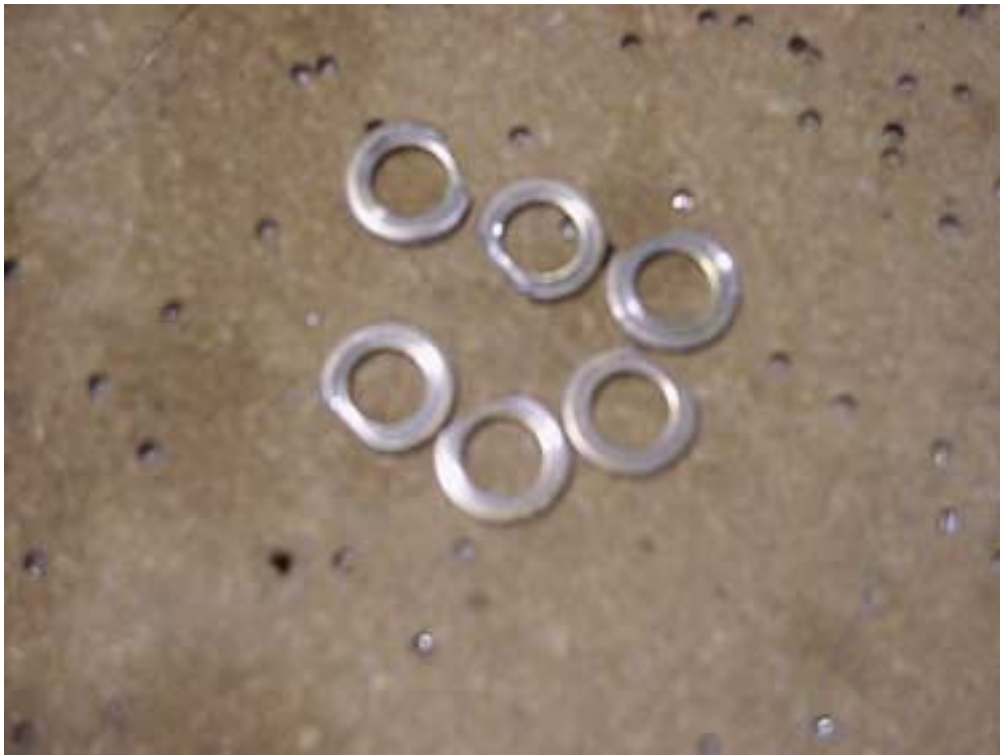
Prop hub (back side)

GSC wood prop with aluminum root ends

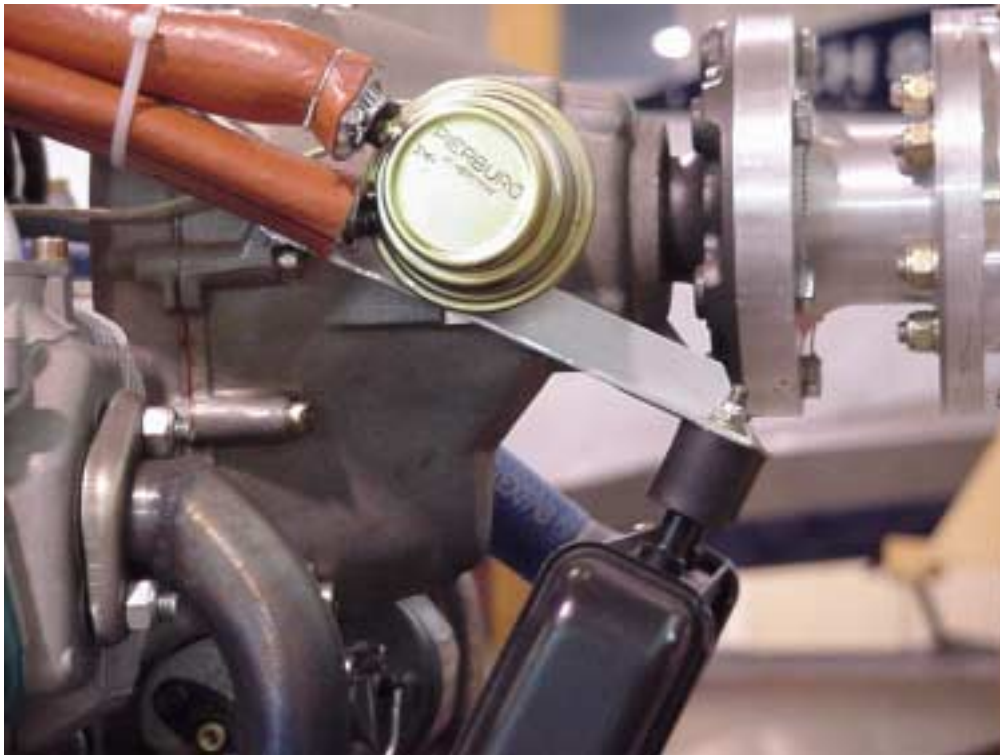


Prop hub (front side)





One side is filed back to fit inside the prop extension.



Self locking nuts and washer for prop bolts